

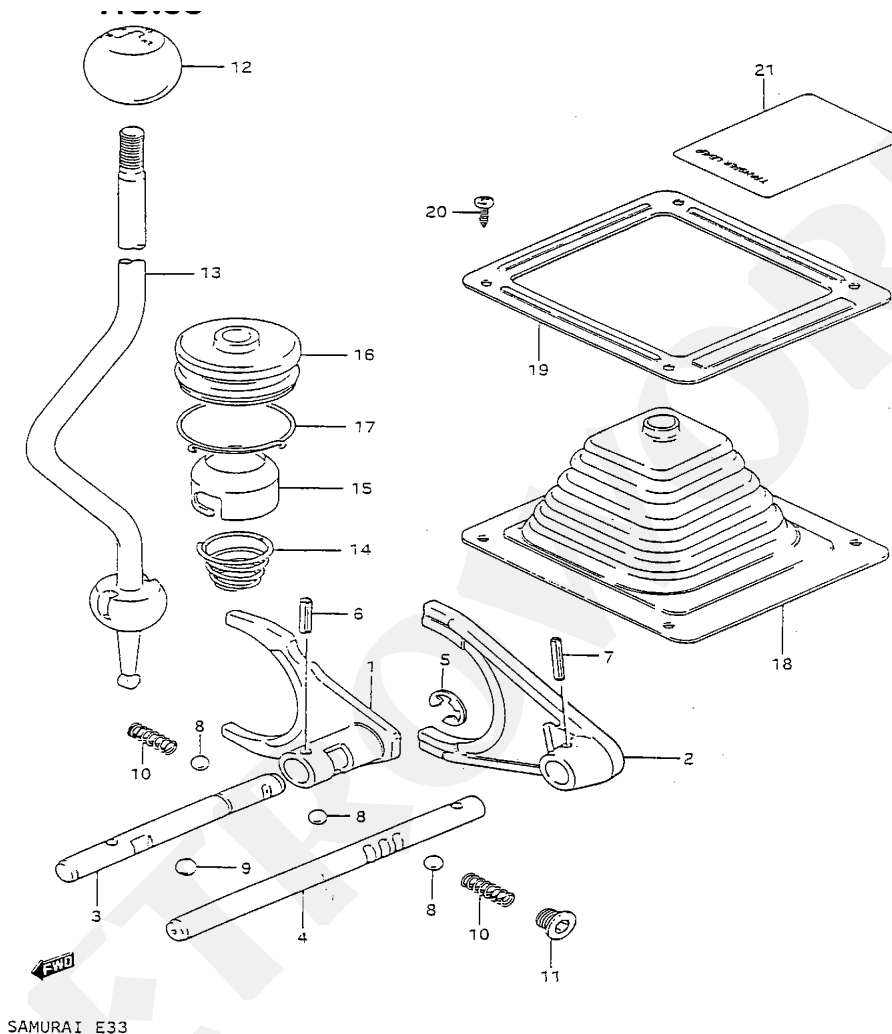


# PETROWORKS

## OFF-ROAD PRODUCTS

[www.petroworks.com](http://www.petroworks.com)

### Transfer Case Shifter and Shift Forks Figure 30



#### Technical Note:

To change out the shift pattern of the T-Case to a Split "H" pattern it requires machining of Part 3. Then welding in of a Spacer. The Split "H" pattern gives you the option of both 2wd Hi and 2wd Low and 4Hi/4Lo. The 2wd Low option is a great option for mild offroading as it creates less stress on the drivetrain, thus reducing the chances of breaking anything. And it allows you to control the car better. Petroworks can do this for you, all our GRS T-Cases come with the Split "H" pattern.